



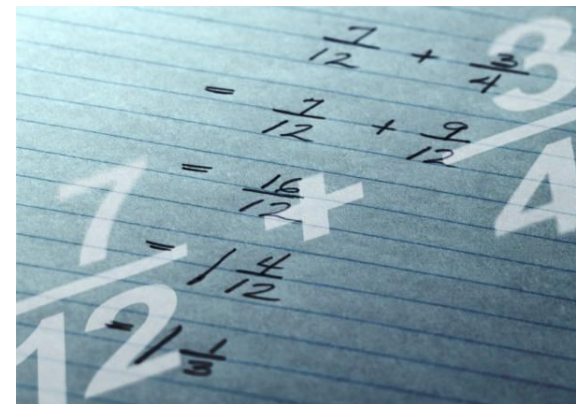
Fraction Through Music



Lesson 9. Introducing the Eighth Note

$\frac{1}{8}$

$\frac{2}{8}$





Fraction Music Game

The correct answer is:

A. 

B. 

C. 

Fantastic!





Fraction Music Game

(For this part you can work with one friend or a group of friends)
You get to play 3 musical notes. One is going to be the correct answer and that will be an eighth note. Play the other two notes longer for 2 – 4 counts.

As the music is performed, ask your friend(s) to keep counting in their head along with each musical note. Remind your friend that the eighth note is equal to only $\frac{1}{2}$ count ($\frac{1}{2}$ beat).

Before you start to play, please tell your friend which musical piece you will play, for example: "Example A" and start your music with a count off: "Ready, Set, Go!".





Fraction Music Game

(Lesson 9. Student's Printout)

Name: _____

Which example is correct?

Draw the music notes next to the boxes below!

A.

B.

C.

Fantastic!





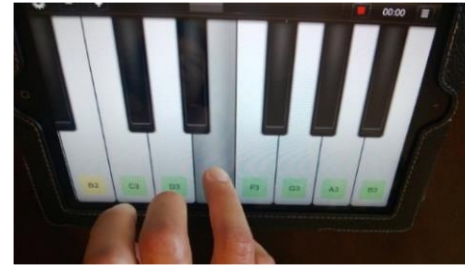
Hand Signs

Piano Fingering Chart

Music Notes



"Mi"



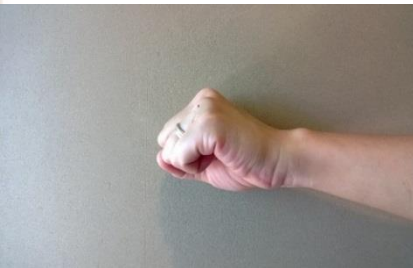
Note E (Mi)



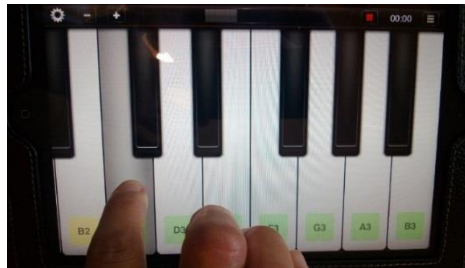
"Re"



Note D (Re)



"Do"



Note C (Do)



©toonesam.org



Thank You!

