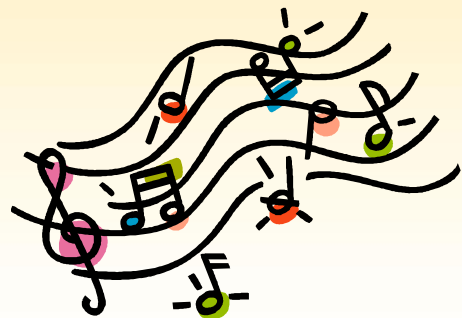




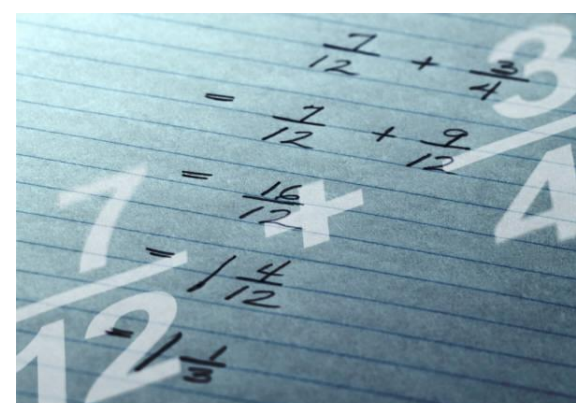
# Fraction Through Music



## Lesson 3. Introducing the Quarter Notes

$\frac{1}{4}$

Worksheets





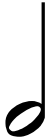
$\frac{2}{8}$





# Fraction Music Game

The correct answer is:

- A.  
- B.  
- C.  

Fantastic!





# Fraction Music Game

*(For this part you can work with one friend or a group of friends)  
You get to play 3 musical notes. One is going to be the correct answer and that will be a quarter note. Play the other two notes longer for 2 – 4 counts.*

*As the music is performed, ask your friend(s) to keep counting in their head along with each musical note. Remind your friend that the quarter note is equal to only 1 count (1 beat).*

*Before you start to play, please tell your friend which musical piece you will play, for example: "Example A" and start your music with a count off: "Ready, Set, Go!"*





# Fraction Music Game

(Student's Printout)

Name: \_\_\_\_\_

Which example is correct?

A.

B.

C.

Fantastic!







## Hand Signs

## Recorder Fingering Chart

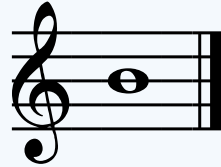
## Music Notes



Note B (Mi)



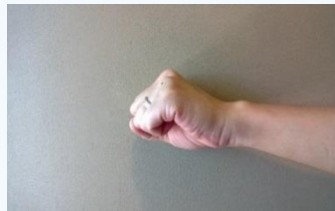
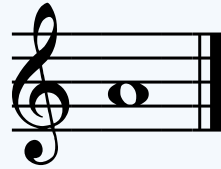
Left Hand Fingers:  
Front: Pointer  
Back: Thumb



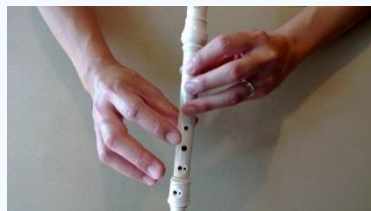
Note A (Re)



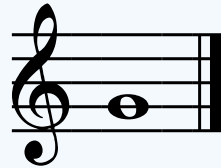
Left Hand Fingers:  
Front: Pointer &  
Middle  
Back: Thumb



Note G (Do)



Left Hand Fingers:  
Front: Pointer,  
Middle & Ring  
Back: Thumb





Thank You!

