

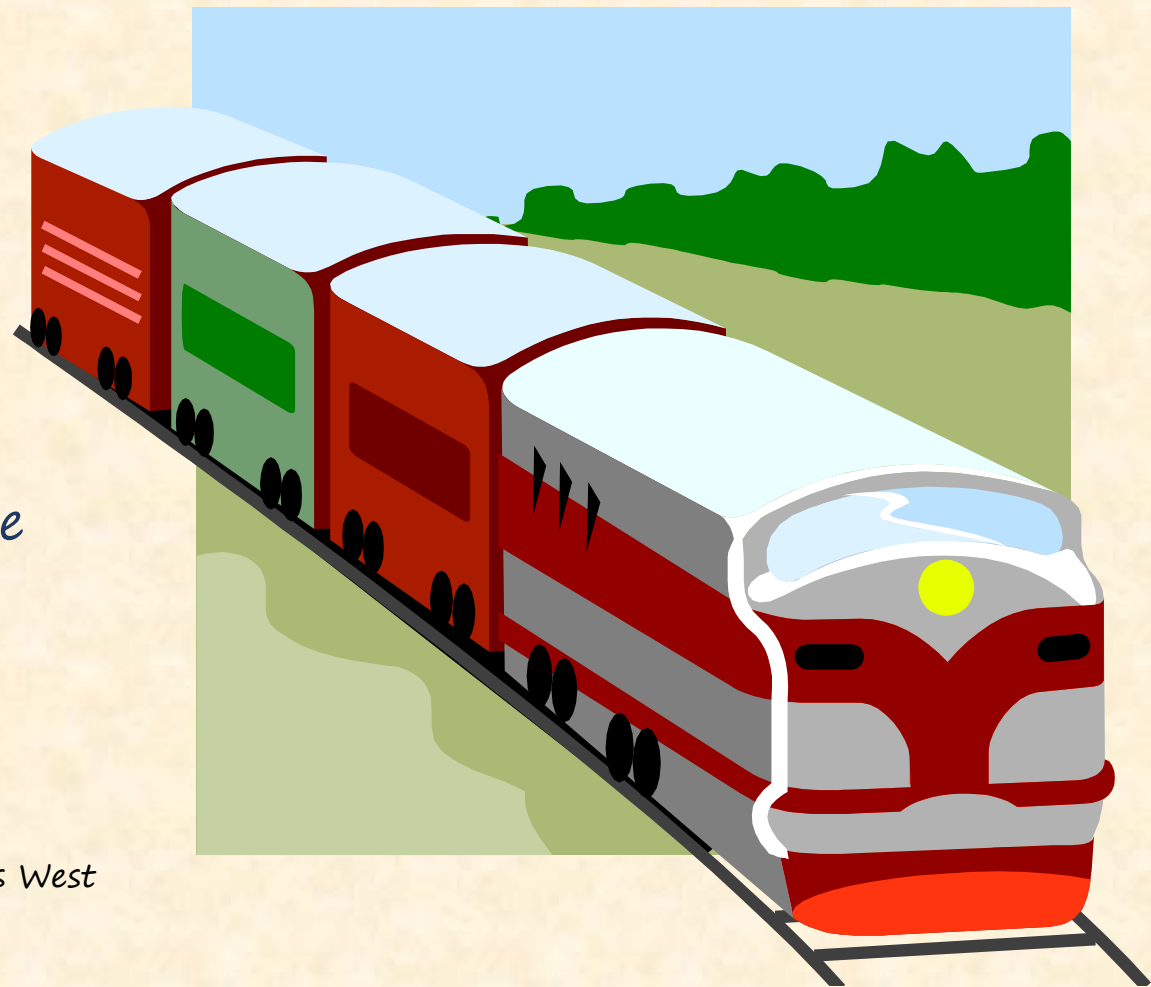


# Down by the Station

Variation on the "Down by the station" theme  
for young musicians

Lesson 29.

Justin's lesson variation is proudly sponsored by local businesses: Pasquale's West Coast, Andy Z and the Omine Karate Dojo.





Part 1.  
(Easy)

Name: Justin

Make your own music! Write your favorite notes above the lines!  
(Use Do, Re and Mi notes!)

Do Do Do Re Mi Mi Re Re Do Re Re Re Do Do Do Do

A musical staff consisting of a single horizontal line with 16 vertical stems extending downwards. Each stem has a solid black oval note head. Below each note is a label: "Do", "Do", "Do", "Re", "Mi", "Mi", "Re", "Re", "Do", "Re", "Re", "Re", "Do", "Do", "Do", "Do".

Now, create your math problem and ask a friend!



Math related question/answer: I used 8 Do's, 6 Re's and 2 Mi's.

I'm going to play the first and second missing notes. What is the 3<sup>rd</sup> missing note? (The 3<sup>rd</sup> missing note is Re.)



Part 1.  
(Easy)

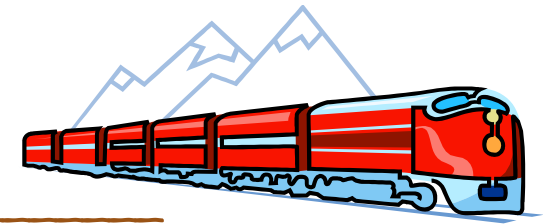
Name: \_\_\_\_\_

Make your own music! Write your favorite notes above the lines!  
(Use Do, Re and Mi notes!)

Do Do Do Re Mi Mi Re Re Do \_ \_ \_ Do Do Do Do

Now, solve Justin's musical problem!

Question\ Answer: How many notes were missing? \_\_\_\_\_



Justin used 8 Do's, 6 Re's and 2 Mi's.

What was the 3<sup>rd</sup> missing note? \_\_\_\_\_, How did you find it out?



## Hand Signs



"Mi"



"Re"



"Do"

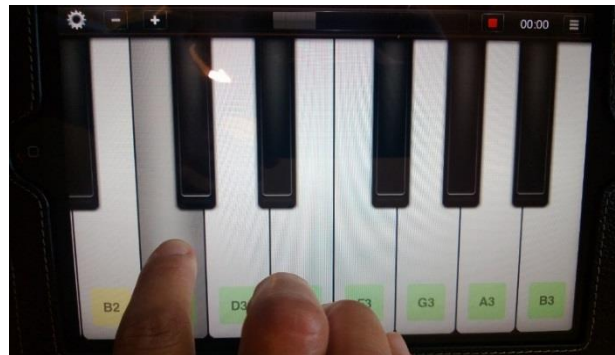
## Piano Fingering Chart



Note E (Mi)  
Ring Finger



Note D (Re)  
Middle Finger



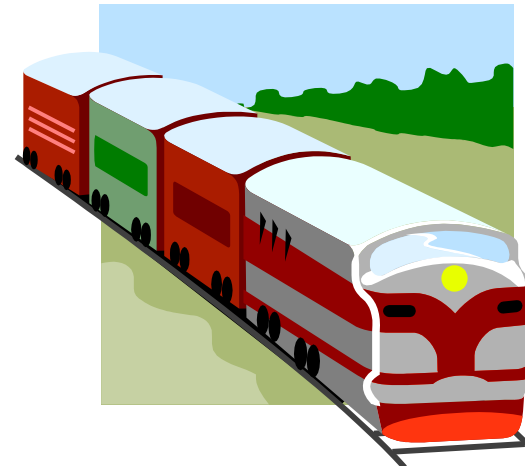
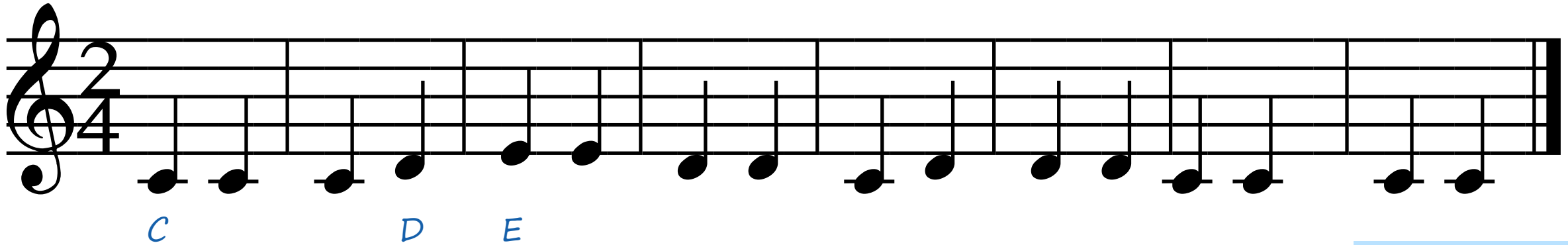
Note C (Do)  
Pointer Finger





Justin's variation on the "Down by the station" theme  
for young musicians  
Lesson 29.

Here is the song using music notation:





# Keyboard Practice Pad

